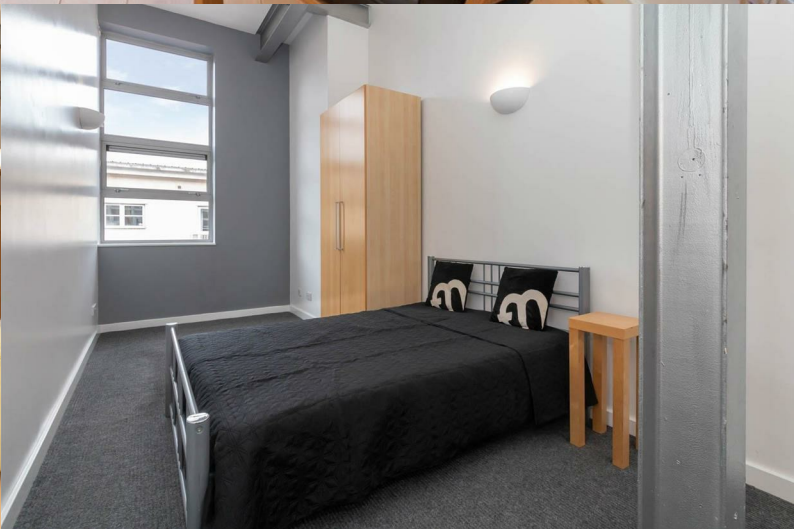




**BUY
ME**



New Hampton Lofts, B18 6BF

£295,000

JEWELLERY QUARTER

- Two double bedrooms
- Secure allocated parking
- Currently tenanted until October 2023 (speak to the team for more info)
- Jewellery Quarter location
- Approximate ground rent: £300pa
- Two bathrooms, one with bath, one with shower
- Large loft-style apartment with extremely high ceilings and character features
- 0.2 miles to Jewellery Quarter Station
- Approximate service charge: £3521.23pa (we have been advised this includes the water charge)
- Approximate lease length: 125 years

